



Product Change Notice

Notice: #100729

Date: July 29, 2010

To Our Valued Customers:

We appreciate your use of V.I Chip products. Our commitment to customer satisfaction is demonstrated by our notification to you of the following change.

Description:

As part of the increase in V.I Chip capacity, we are qualifying new package molding equipment and a new panel array layout. In our original 16 –up (4.464” x 8.273”) array, the mold compound flowed from the center outward over individual circuits. In the new 16-up (3.110” x 7.559”) array, the mold compound flows from the edge over two circuits which are individually sawn. There are no changes to the external dimensions of the package. However, there will be a small change to the underside of the package that you may notice upon careful examination (see table). As there are no changes to materials or V.I Chip circuitry, there are no expected changes to thermal, mechanical or electrical performance of the parts.

A qualification plan is on file. Qualification results available 16 AUG 2010.

There are no changes to part numbers / ordering requirements.

Products Affected:

All V.I Chip products (BCM, PRM, and VTM), including both full and half sized chips, will convert to the new molding process in a phased rollout.

Schedule / Datecodes:

- Process Qual complete, ready for mass production by 16 AUG 2010.
- First mass production product could ship on 16 AUG 2010 (datecode 1034). After this date, product may be provided in either form until original raw materials have been consumed.
- All products will be converted by the end of 2010.

Action Required:

As there is no change to the external dimensions or PCB footprint, no interference fit issues are expected. However, you may like to check that the new package does not interfere with components in close proximity to existing V.I Chip products.

Technical Marketing contact:

Christina Ocasio
V.I Chip Inc.
25 Frontage Road
Andover, MA 01810
(978) 749-3334
cocasio@vicr.com

Attached:

Drawing 32607 – Old Full Size Mechanical Drawing
Drawing 36058 – New Full Size Mechanical Drawing
Drawing 33491 – Old Half Size Mechanical Drawing
Drawing 36086 – New Half Size Mechanical Drawing

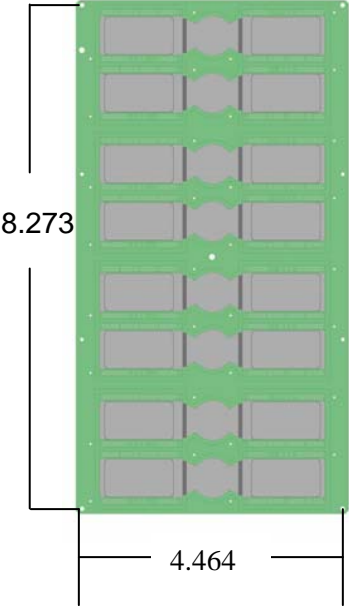
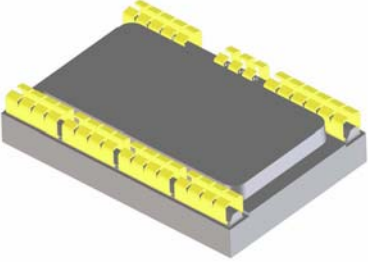
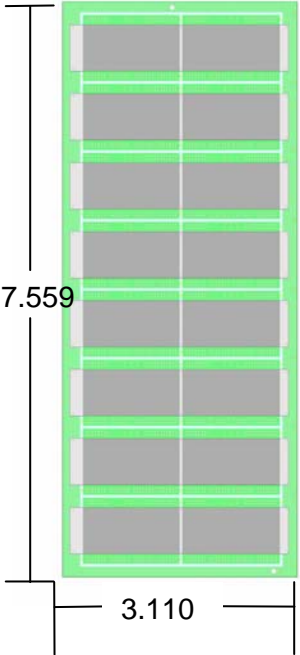
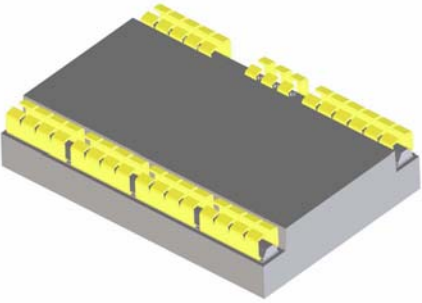
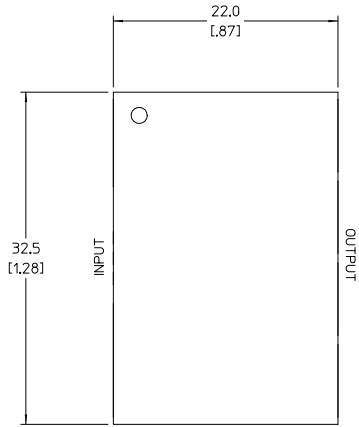
	Panels	Chips
Old		
New		

Table 1: Panel Array and Package Comparison

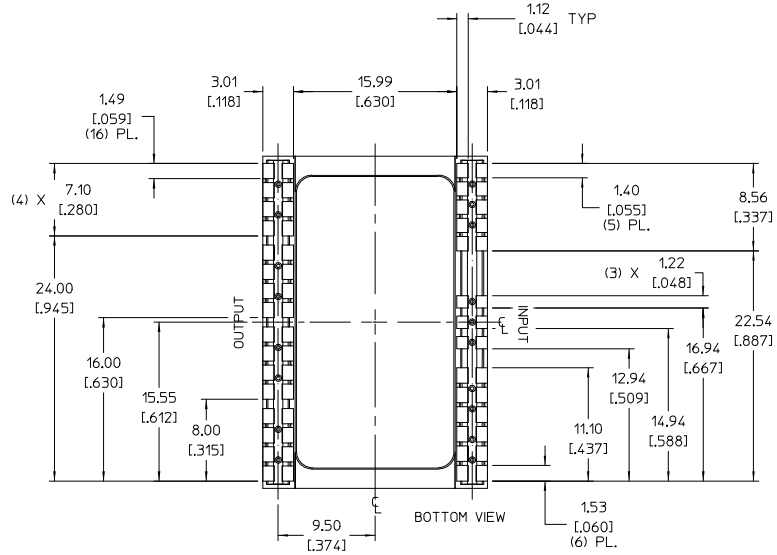
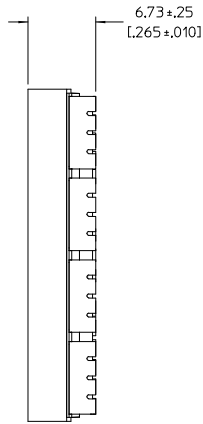
VICOR CONFIDENTIAL

THIS DOCUMENT AND THE DATA DISCLOSED HEREIN OR HEREWITH IS NOT TO BE REPRODUCED, USED, OR DISCLOSED IN WHOLE OR IN PART TO ANYONE WITHOUT PERMISSION OF VICOR CORP.

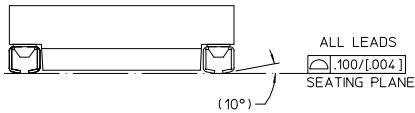
REV.	DESCRIPTION	DATE	APVD
1	RELEASED PER E080738	SA 4/11/08	RE.H
2	REVISED PER E090487b	EM 3/19/09	RH
3	REVISED PER E091092	JS 07/10/09	AR
4	REVISED PER E091236a	AR 07/29/09	RE.H
5	REVISED PER E091826	JS 10/12/09	RE.H



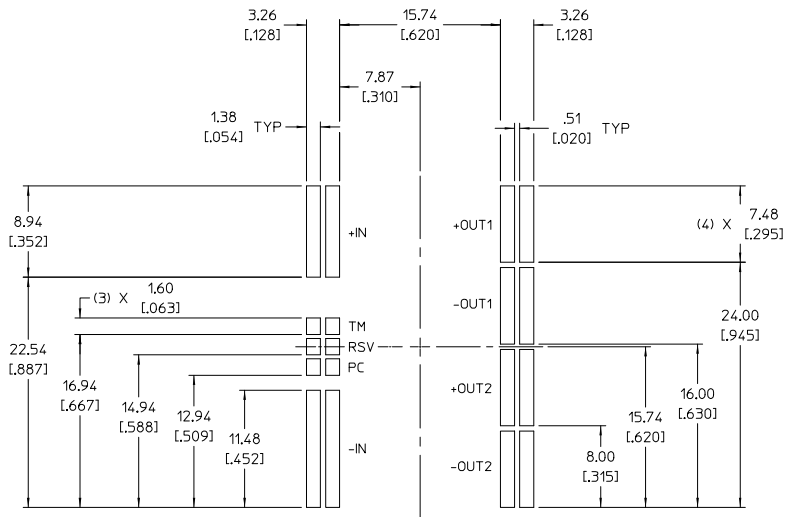
TOP VIEW (COMPONENT SIDE)



BOTTOM VIEW



ALL LEADS
±0.100 [0.004]
SEATING PLANE



RECOMMENDED LAND PATTERN

(COMPONENT SIDE SHOWN)

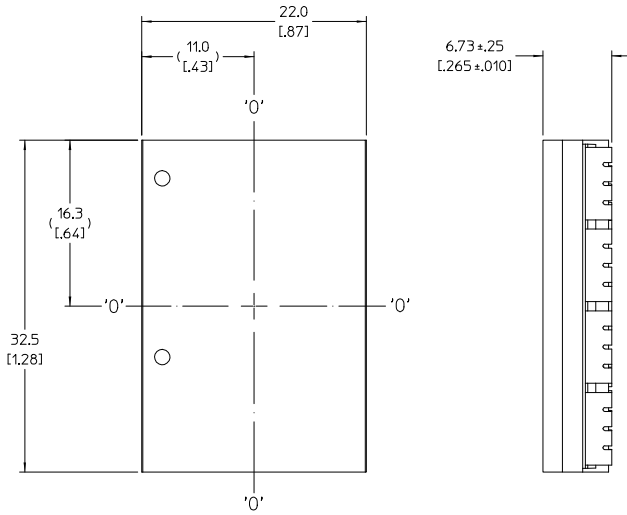
NOTE:

1. RoHS COMPLIANT PER CST-0001 LATEST REVISION.

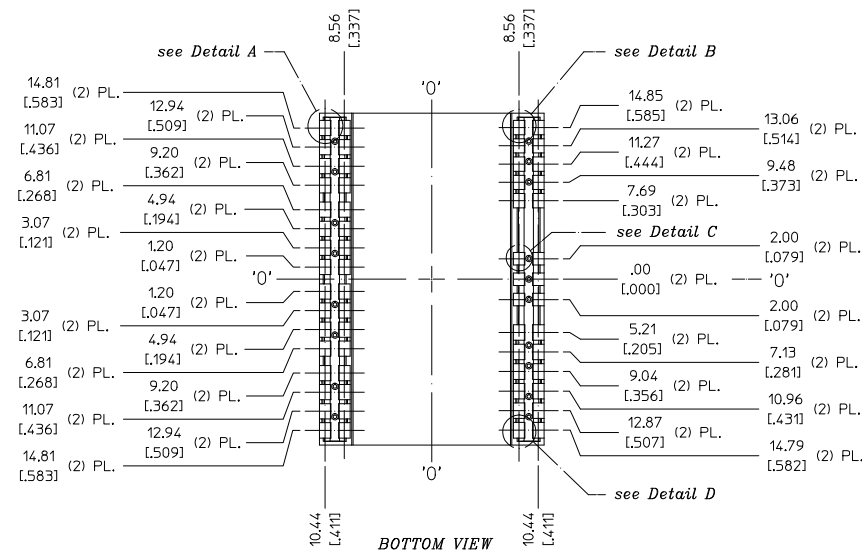
DRAWN BY: EM	DATE: 3/13/08			
<small>UNLESS OTHERWISE SPECIFIED: DIMENSIONS ARE IN INCH TOLERANCES ARE: XXX.XXXXX - .002 (MIN) XXX.XXXXX - .002 (MAX) XXX.XXXXX - .002 (MIN)</small>	<small>SCALE: ANGLES: °</small>			BCM PRODUCT OUTLINE, ON BOARD MOUNT, PKG 2
<small>THIRD ANGLE PROJECTION</small> 	<small>SIZE</small> D	<small>P/SCH NO.</small> 67131	<small>DWG NO.</small> 32607	<small>REV</small> 5
<small>DO NOT SCALE DRAWING</small>	<small>SCALE</small> 4:1	<small>SHEET</small> 1	<small>OF</small> 1	

VICOR CONFIDENTIAL
 THIS DOCUMENT AND THE DATA DISCLOSED
 HEREIN OR HEREWITH IS NOT TO BE REPRODUCED,
 USED, OR DISCLOSED IN WHOLE OR IN PART
 TO ANYONE WITHOUT PERMISSION OF VICOR CORP.

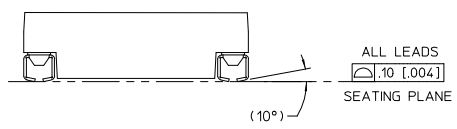
REV.	DESCRIPTION	DATE	APPRO
#1	DRAWN FOR DEVELOPMENT	11/17/09	REJH



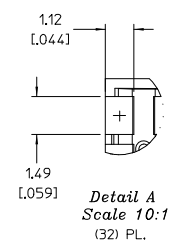
TOP VIEW (COMPONENT SIDE SHOWN)



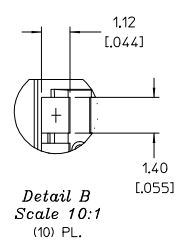
BOTTOM VIEW



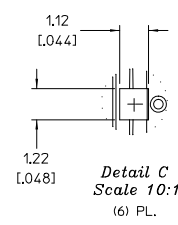
ALL LEADS
 .10 [L.004]
 SEATING PLANE
 (10°)



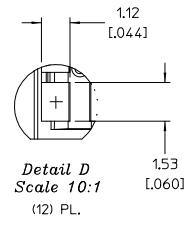
Detail A
 Scale 10:1
 (32) PL.



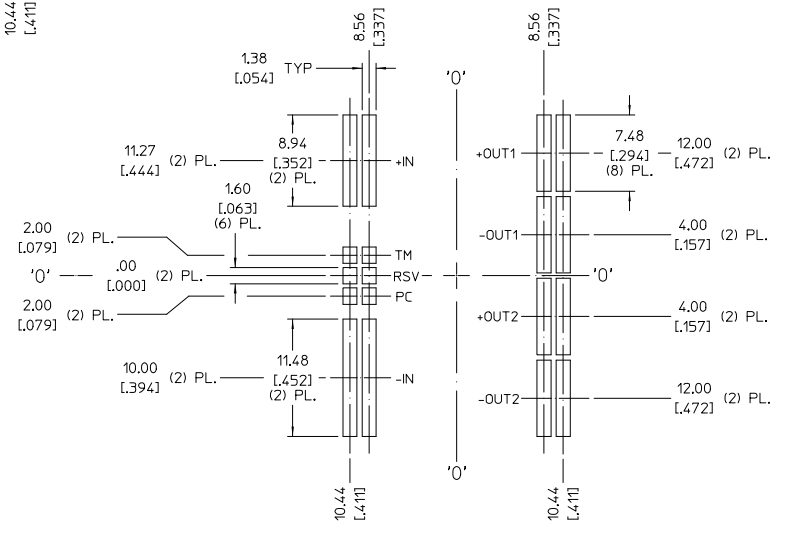
Detail B
 Scale 10:1
 (10) PL.



Detail C
 Scale 10:1
 (6) PL.



Detail D
 Scale 10:1
 (12) PL.



RECOMMENDED LAND PATTERN
 (COMPONENT SIDE SHOWN)

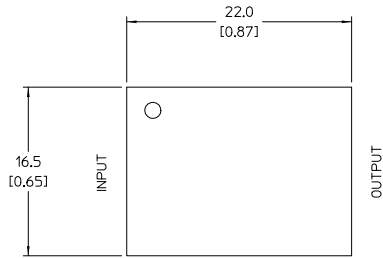
NOTE:
 1. RoHS COMPLIANT PER CST-0001 LATEST REVISION.

DRAWN BY R.L.J. JENSEN	DATE 11/17/09	VICOR	
UNLESS OTHERWISE SPECIFIED DIMENSIONS ARE IN INCHES DIMENSIONS ARE TO UNLESS NOTED OTHERWISE		PRODUCT OUTLINE DWG BCM W/J-LEADS PKGS	DWG NO 36058
THIRD ANGLE PROJECTION	SCALE 4:1	CAGE CODE 67131	SHEET 1 OF 1

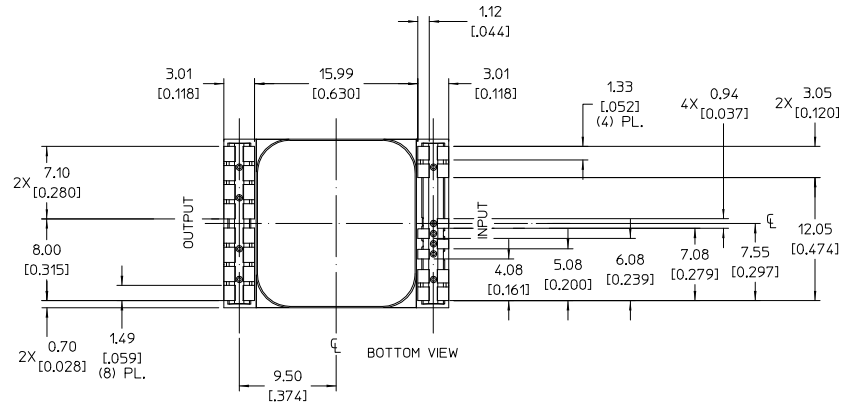
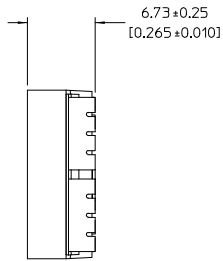
VICOR CONFIDENTIAL

THIS DOCUMENT AND THE DATA DISCLOSED HEREIN OR HEREWITH IS NOT TO BE REPRODUCED, USED, OR DISCLOSED IN WHOLE OR IN PART TO ANYONE WITHOUT PERMISSION OF VICOR CORP.

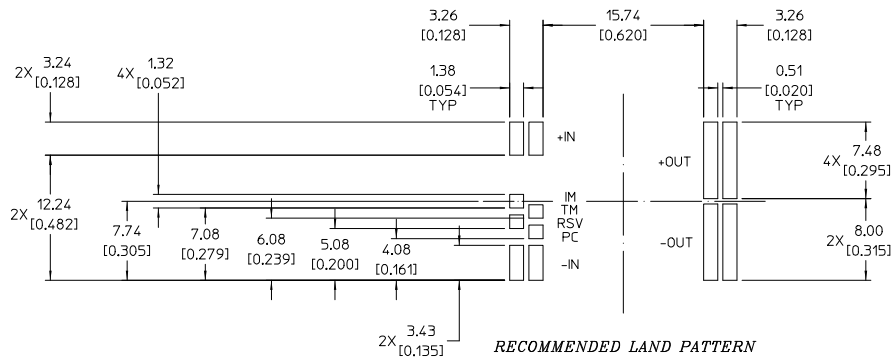
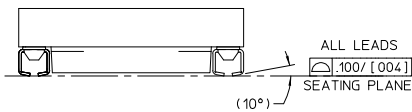
REV.	DESCRIPTION	DATE	APVD
1	DOCUMENT RELEASED PER E0912130	JS 07/31/09	REJH
2	DOCUMENT RELEASED PER E091826	JS 10/12/09	REJH



TOP VIEW (COMPONENT SIDE)



BOTTOM VIEW



RECOMMENDED LAND PATTERN
(COMPONENT SIDE SHOWN)

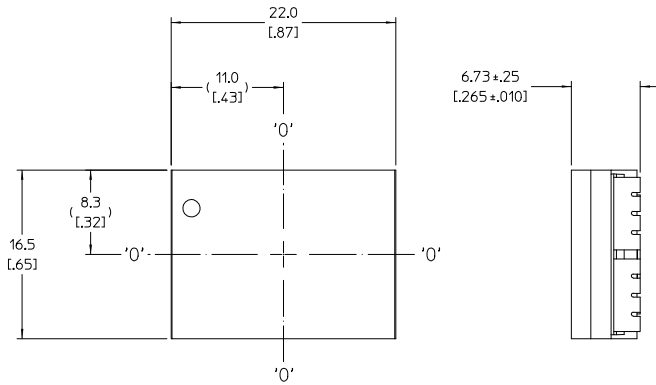
NOTE:

1. RoHS COMPLIANT PER CST-0001 LATEST REVISION

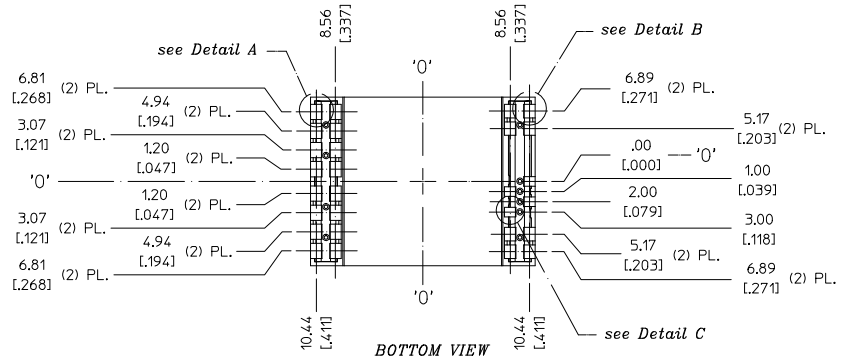
DRAWN BY R.E. JIMENEZ CHECKED BY DATE 01/21/07 UNLESS OTHERWISE SPECIFIED DIMENSIONS ARE IN INCHES TOLERANCES ARE: DECIMALS ±0.005 FRACTIONS ±0.0005 HOLE DIA ±0.0005 ANGLES ±0.0005	VICOR J-LEAD 1/2 BCM PKG2 PRODUCTION OUTLINE
THIRD ANGLE PROJECTION DO NOT SCALE DRAWING	SIZE D CAGE CODE 67131 DWG NO 33491 SCALE 4:1 SHEET 1 OF 1 REV 2

VICOR CONFIDENTIAL
 THIS DOCUMENT AND THE DATA DISCLOSED
 HEREIN OR HEREWITH IS NOT TO BE REPRODUCED,
 USED, OR DISCLOSED IN WHOLE OR IN PART
 TO ANYONE WITHOUT PERMISSION OF VICOR CORP.

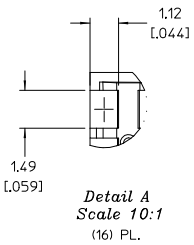
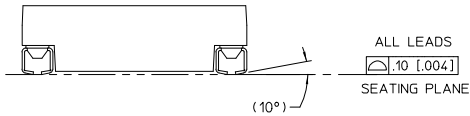
REV.	DESCRIPTION	DATE	APVD
#1	DRAWN FOR DEVELOPMENT	RE:JH 11/20/09	RE:JH



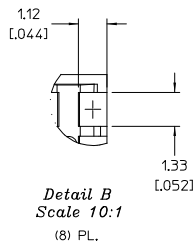
TOP VIEW (COMPONENT SIDE)



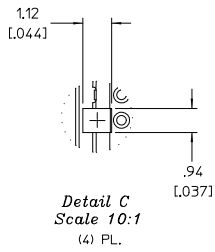
BOTTOM VIEW



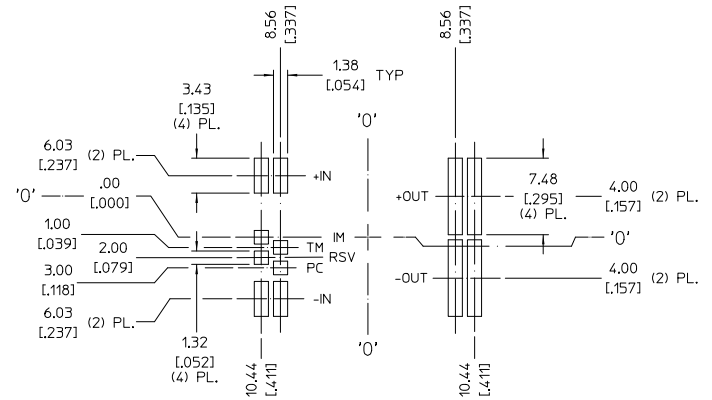
Detail A
Scale 10:1
(16) PL.



Detail B
Scale 10:1
(8) PL.



Detail C
Scale 10:1
(4) PL.



RECOMMENDED LAND PATTERN
(COMPONENT SIDE SHOWN)

NOTE:

1. RoHS COMPLIANT PER CST-0001 LATEST REVISION.

DRWNG BY: J.E. LEWIS	DATE: 11/20/09		
UNLESS OTHERWISE SPECIFIED DIMENSIONS ARE IN INCHES TOLERANCES ARE:	SCALE: AS SHOWN		
THIRD ANGLE PROJECTION	SIZE: D	CAGE CODE: 67131	REV: #1
DO NOT SCALE DRAWING	SCALE: 4:1	DWG NO: 36086	SHEET 1 OF 1

PRODUCT OUTLINE DWG
 BCM W/J-LEADS, HALF PKGS